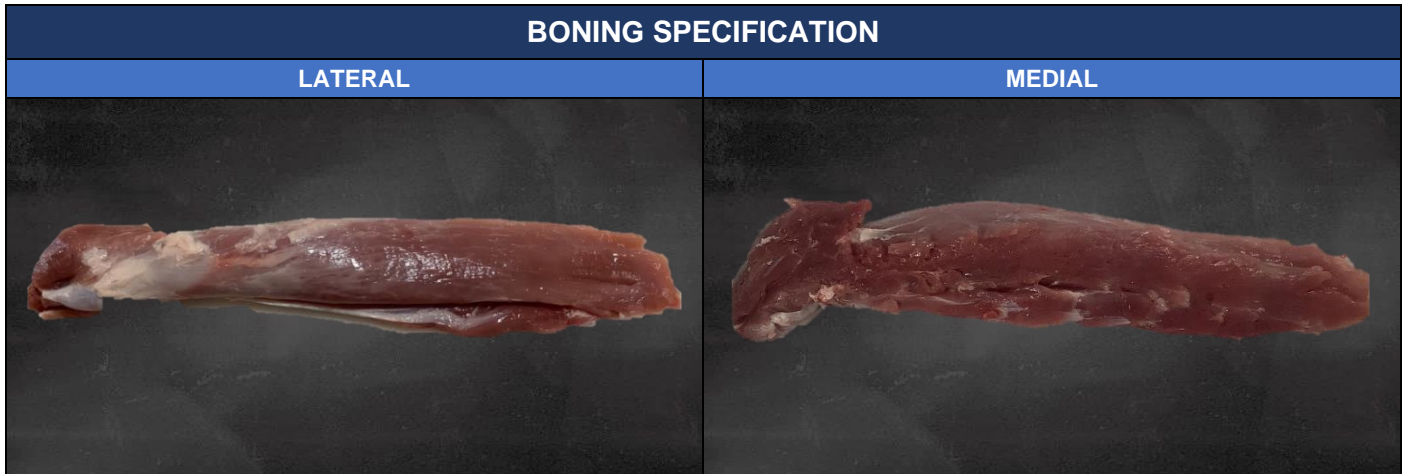


Code	312300J0
Description	Pork Tenderloin R/L B/L



CARCASE	SPECIFICATION POINTS	<ul style="list-style-type: none"> • Grade: 1,2,3,4,5 • P2 fat depth: Any • Carcase weight: Any
	DEFECTS	<ul style="list-style-type: none"> • Carcase hair • Blood clot/bruise • Foreign material (grease, rail dust, plastic, metal etc.) • Zero tolerance defects (faeces, abscesses, ingesta etc.)

CUTTING FURTHER PROCESSING	PROCESS STEPS	<ul style="list-style-type: none"> • Remove with a straight cut from the ilium bone and ventral aspect of lumbar vertebrae and last thoracic vertebrae. • Retain side strap. • Retain silver skin. • Remove fat between Mm. psoas and M. iliacus.
	SPECIFICATION POINTS	<ul style="list-style-type: none"> • Entire Tenderloin retaining head
	DEFECTS	<ul style="list-style-type: none"> • Bone chips and cartilage • Bruise/blood clot • Glands • Fat • Foreign material (grease, rail dust, plastic, metal etc.)



Document Name	Document Code	Version Number	Written/Revised By	Reviewed By	Authorised By
Product Specification 312300J0	WP.QA.SPEC.632	2.0	Barinder Kaur	Scott Noon Matt Troy	Tom Stewart

Code	312300J0
Description	Pork Tenderloin R/L B/L

PACKING SPECIFICATION	
LATERAL	MEDIAL
	

KEY SPECIFICATION POINTS		
PRIMARY PACKAGING	SECONDARY PACKAGING	PACKING FORMAT
		

BAGGING	SPECIFICATION POINTS	<ul style="list-style-type: none"> • Bagging format: 1 piece per pouch
	DEFECTS	<ul style="list-style-type: none"> • Incorrect or damaged packaging or label • Leaking vacuum • Poor or loose shrink (pack not tight)

PACKING	SPECIFICATION POINTS	<ul style="list-style-type: none"> • Packing format: 12 packs/carton • Crate weight: < 7.00 kg • Foods Connected: 685259
	DEFECTS	<ul style="list-style-type: none"> • Incorrect or damaged packaging or label • Label not aligned on carton/crate • Mixed product

ADDITIONAL REQUIREMENTS		
BILL OF MATERIALS	LABELLING	MICROBIOLOGICAL
6000095 NECK BASE (QTY: 1) 6003854 LID OPEN TOP RETAIL 4PT GLUE BEC V2 (QTY: 1) 6001353 LABEL WP CARTON 70X148 (EXT ADHESIVE) (QTY:1) 6003198 FILM THERM 423MMx500M 90UM CLR 6003199 FILM THERM 423MMx600M 125UM CLR 6002745 LABEL COOL AUSTRALIAN GROWN AP RD 1 (QTY:12)	EAN: 99322025123309 TUN: N/A Claims: N/A Allergens: N/A Country of Origin: Australia Label Format: 28 (NSW) Price: N/A Max. Shelf Life: 28 Days Min. Life on Receipt: N/A	Standard Plate Count: < 100,000 cfu/g E. coli: < 10 cfu/g Coliforms: N/A Salmonella: N/A Enterobacteriaceae: < 10,000 cfu/g Yeast: N/A Mould: N/A Bacillus Cereus: N/A

Document Name	Document Code	Version Number	Written/Revised By	Reviewed By	Authorised By
Product Specification 312300J0	WP.QA.SPEC.632	2.0	Barinder Kaur	Scott Noon Matt Troy	Tom Stewart